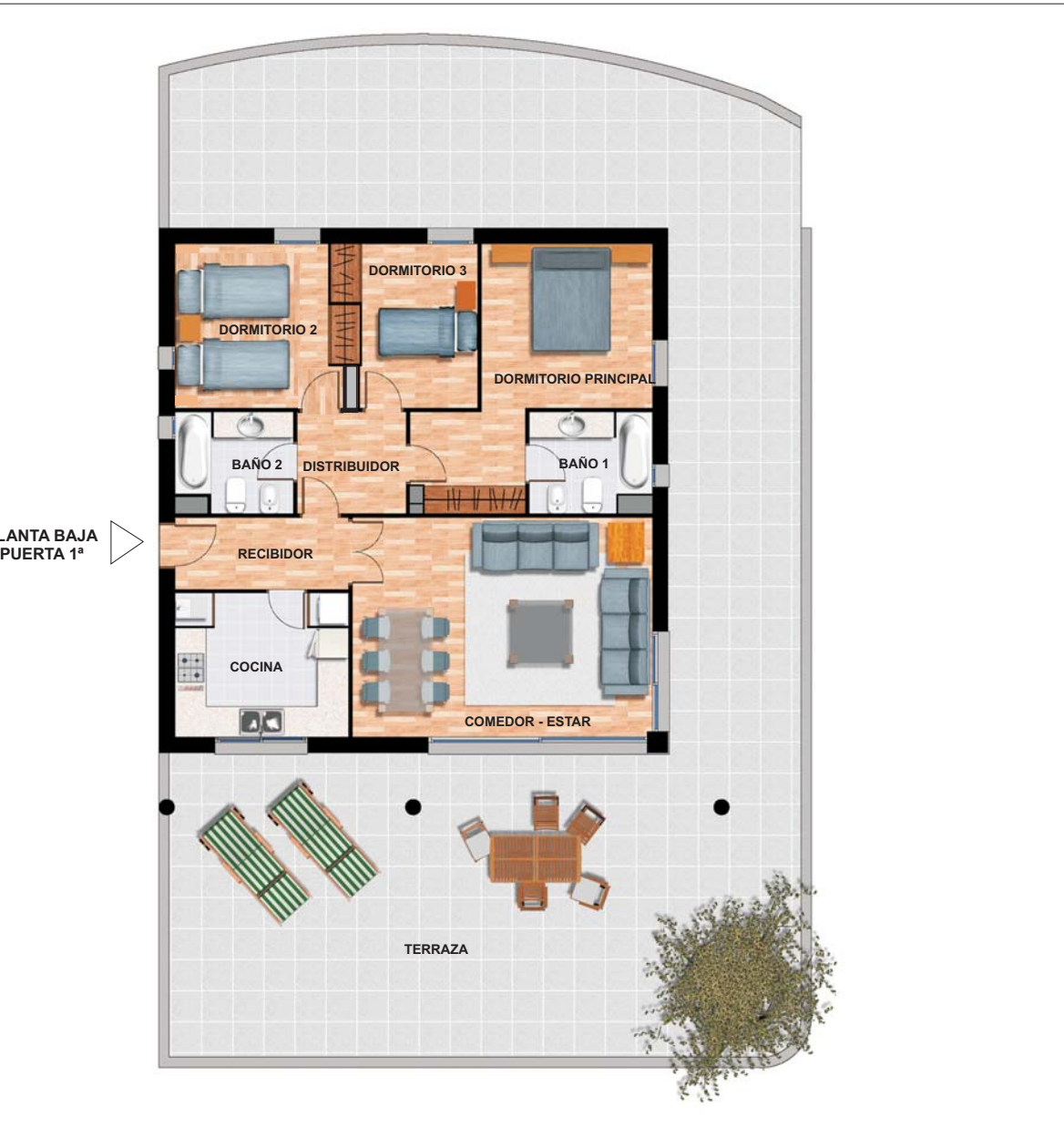


# EDIFICIO A - ESCALERA B

## PLANTA BAJA PUERTA 1 ( VIVIENDA 3 )



| SUPERFICIES ÚTILES                                |               |          |             |            |                 |
|---|---------------|----------|-------------|------------|-----------------|
| PLANTA BAJA ESC. B                                |               |          | VIVIENDA 3  |            |                 |
| PIEZAS  |               | S.Util   | Iluminacion | Ventilacio | Habit.          |
| R   | Recibidor     | 4.72 m²  |             |            |                 |
| ME  | Estar-comedor | 24.00 m² | 13.64 m     | 6.82 m²    | S               |
| C   | Cocina        | 9.11 m²  | 1.68 m      | 0.84 m²    | C               |
| C   | Circulacion   | 3.95 m²  |             |            |                 |
| B1  | Baño 1        | 4.76 m²  | 0.48 m      | 0.54 m²    | B               |
| B2  | Baño 2        | 4.59 m²  | 0.48 m      | 0.54 m²    | B               |
| D1  | Dormitorio 1  | 14.19 m² | 1.77 m      | 1.97 m²    | H               |
| D2  | Dormitorio 2  | 10.00 m² | 2.25 m      | 2.51 m²    | H               |
| D3  | Dormitorio 3  | 8.07 m²  | 1.77 m      | 1.97 m²    | H               |
| <b>TOTAL SUP. UTIL VIVIENDA 3 PL. BAJA ESC. B</b> |               |          |             |            | <b>83.39 m²</b> |
| TE  | Terraza       |          |             |            | 142.45 m²       |

### ESCALERA B

